

# New discoveries in B.C. Canada

# HAPPY CREEK MINERALS LTD.

TSX-V:HPY

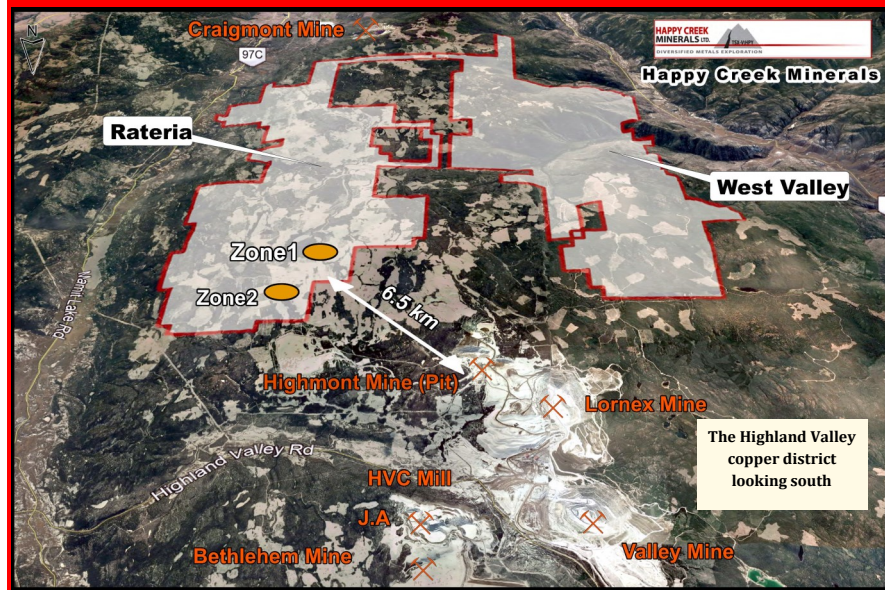
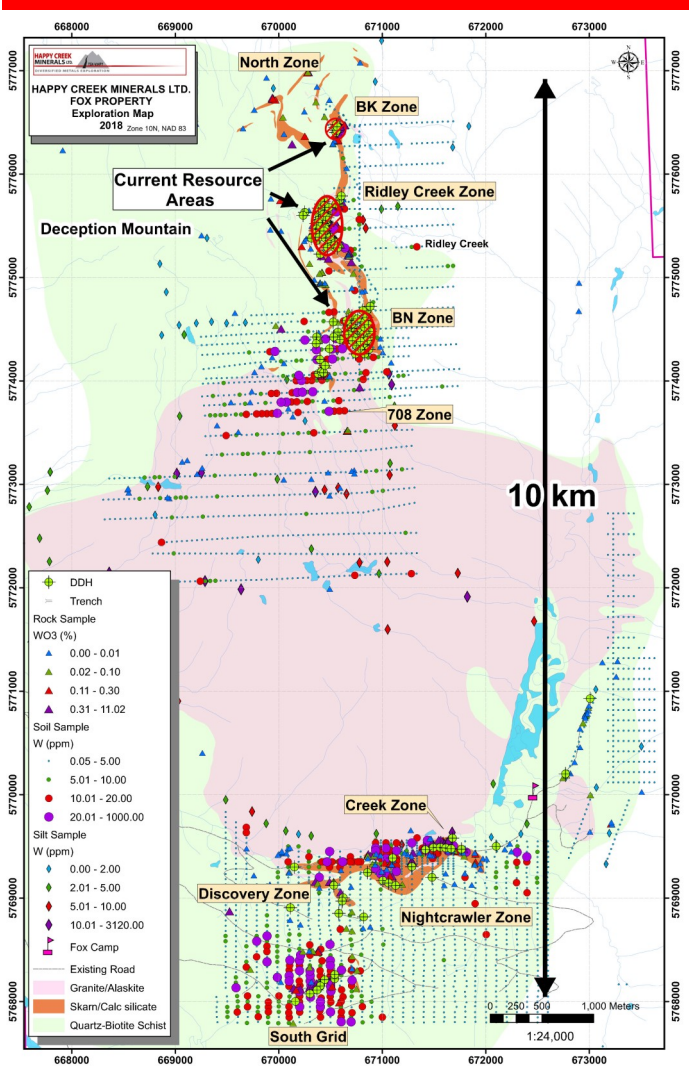
DIVERSIFIED METALS EXPLORATION®



**Management**  
 David Blann, P.Eng., President, CEO, Director  
 Walter Segsworth, P.Eng., Director, Chair  
 Rodger Gray, Director  
 Paul Berndt, FAusIM, Director  
 Michael Cathro, P. Geo., Director  
 Richard Lee, CMA, Chief Financial Officer

The Fox project is a new, large-scale, from-scratch discovery with among the highest tungsten grades in the western world. The Fox is on track to be a leading contender for development.

Shares outstanding: 92,218,997  
 (Registered/Certificated: 18,353,191)  
 Warrants: 6,336,546 @ avg. \$0.17  
 Options: 5,700,000 @ avg. \$0.21  
 Year Low: \$0.15 Year High: \$0.25



The 200 Km<sup>2</sup> Rateria-West Valley property holds two new deposit discoveries and 25 under-explored prospects within the Highland Valley, where 5 deposits achieved commercial production. This is a top-quality copper exploration project with potential for giants in a district containing Canada's largest copper producer.

This research profile is for information purposes only and may contain statements that are forward looking and subject to risks and uncertainties more fully described in the Company's Prospectus, Financial Statements and public filings located on SEDAR. Neither the TSX Venture Exchange nor its Regulation Services Provider (as that term is defined in the policies of the TSX Venture Exchange) accepts responsibility for the adequacy or accuracy of information contained herein. Results or information from an adjoining property does not infer similar results or information occurs on the subject property.

Happy Creek Minerals Ltd. Suite 460-789 West Pender Street Vancouver, B.C. Canada V6C 1H2

Office Ph: 604.662.8310 Toll free: 1.877.662.8310 Email: info@happycreekminerals.com, website: www.happycreekminerals.com

Bircress Corporate Relations Inc. Ph: Ron Birch 1-250-545-0383 / 1-800-910-7711



# Fox tungsten

100% interest

A new from-scratch tungsten discovery in a great location

Grades among the highest in the western world

CLASSIFICATION	Cut-off WO <sub>3</sub> (%) OP/ UG	Tonnes (t)	WO <sub>3</sub> (%)	WO <sub>3</sub> MTU	WO <sub>3</sub> (kg) Contained
<b>Indicated total</b>	>0.175/>0.45	<b>582,400</b>	<b>0.826</b>	<b>480,500</b>	<b>4,805,000</b>
<b>Inferred total</b>	>0.175/>0.45	<b>565,400</b>	<b>1.231</b>	<b>695,800</b>	<b>6,958,000</b>



Gravity recovery to concentrate

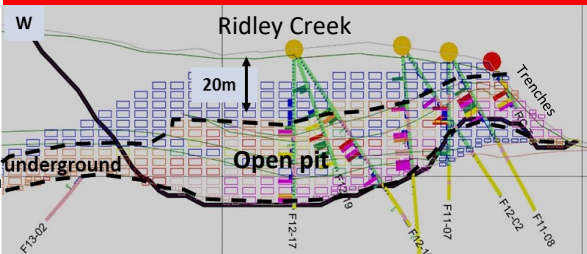


Cut-off: OP (open pit) /UG (underground).  
Refer to News Release February 27, 2018.  
Current tungsten prices are currently around CDN \$30/Kg in concentrate.

Values of zinc, indium, bismuth, gold and silver are not included in the resource at this time.

7 Zones and numerous showings in a 10 Km by 3 Km tungsten skarn system. Potential to expand resources.

A rare, high-grade critical metal discovery at surface. Current western publicly trading tungsten companies are mining 0.18-0.25% WO<sub>3</sub>. North America produces less than 1% of demand and is heavily reliant on imports.



The Cantung mine (closed) is located in a very remote region of the Yukon/NWT. Probable Reserve grade 0.81% WO<sub>3</sub>. While in production it was among the largest & highest grade tungsten mines in the western world.

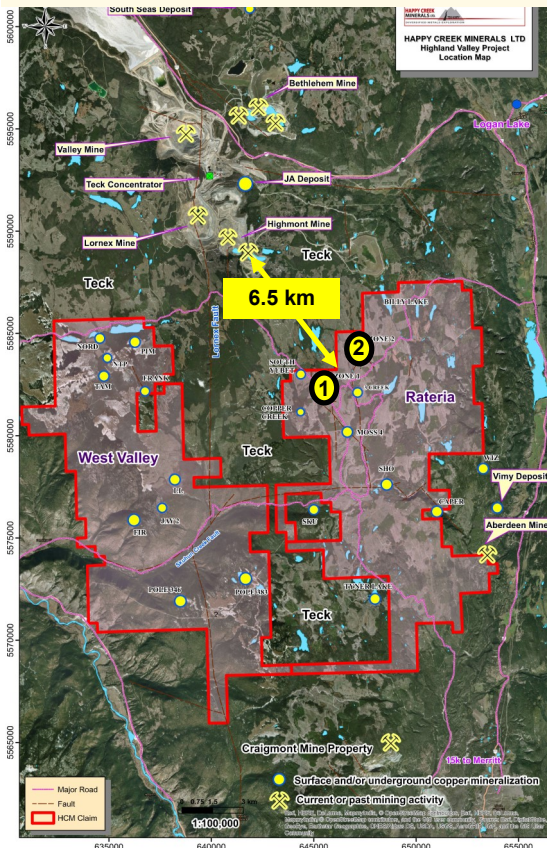
The Fox has similar grade to the Cantung mine and is much closer to infrastructure and in a better operating environment.

# Rateria-West Valley

100% interest

200 km<sup>2</sup> of prospective geology in the Highland Valley, B.C.

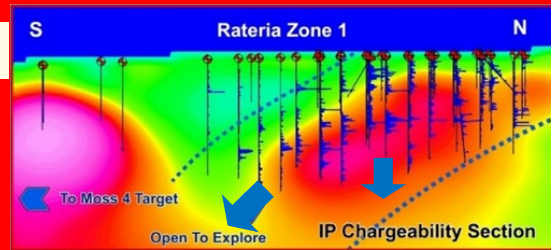
A top quality copper exploration asset



The Highland Valley district has 5 copper deposits achieving commercial production. Zone 1&2 are new discoveries with near-term resource potential and open to expand. Potential for copper-gold deposits. 46m 0.64% Cu, 0.30 g/t gold. Rhenium (Re) values are significant. More than 25 under-explored copper prospects. Area >90% covered by glacial till and most of it has not seen modern technology applied. Geology is prospective for large deposits.

## Zone 1 & 2 Drilling Highlights

Zone 1 DDH	Interval (metres)	Cu %	Ag g/t
R07-9	100	0.29	1
R10-12	236	0.27	1
R11-1	95	0.65	3.6
R11-6	100	0.35	2.2
R11-8	250	0.25	1.6
R11-11	242	0.25	1.6



Zone 2 DDH	Interval (m)	Cu %	Ag g/t	Mo %	Au g/t	Re g/t
R08-01	113	0.33	1.48	0.002	0.05	N/A
R08-05	126	0.46	1.71	0.008	0.10	N/A
R12-01	93	0.30	1.5	0.005	0.15	0.02
R12-02	152	0.35	1.7	0.004	0.06	0.57
R17-02	5	4.41	20.0	0.031	0.21	6.86
R17-05	105	0.37	1.9	0.005	0.14	0.63
R17-08	82	0.29	1.25	0.003	0.06	0.17
and	66	0.35	1.64	0.002	0.02	0.23

